



# Spero-QT<sup>®</sup>

## ULTRAFAST, WIDE-FIELD MID-IR MICROSCOPY

The Spero-QT<sup>®</sup> remains the highest-performance and most versatile infrared microscopy platform available. Powered by Daylight's award winning quantum cascade laser (QCL) technology, the small desktop sized instrument uses a proprietary wide-field, low-noise imaging architecture to enable real-time spectroscopic analysis for a range of Pharmaceutical, Materials and Life Sciences applications. The Spero-QT is equipped with a high-precision automated sample stage which accommodates as many as three standard microscope slides. Finally, a large sample compartment area makes the Spero-QT compatible with a variety of microfluidic devices and accessories.

### INSTANTANEOUS RESULTS IN LIVE MODE

Produces hyperspectral data cubes in seconds and also supports live discrete-frequency imaging, eliminating standard, time-consuming workflow steps to acquire data.

### HIGHLIGHTS

- Reflection AND transmission modes
- Live video-rate IR imaging
- High-sensitivity measurements (< 3 mAU)
- Fast hyperspectral scan speeds (> 7 M spectral points per second)
- Multiple, high-NA, large FOV imaging optics
- Large, flexible sample compartment
- Easy-to-use ChemVision™ software included
- Multiple output file formats available
- Chemometrics packages available
- No cryogenic cooling needed
- Small footprint

# INFRARED MICROSCOPY WILL NEVER BE THE SAME

## APPLICATIONS

- Tissue analysis
- Live cell imaging
- Liquid and microfluidic analysis
- Chemical reaction monitoring
- Polymer science
- Plasmonics and metamaterials
- Materials inspection
- Tablet API mapping
- Protein analysis
- Forensics

## SPECIFICATIONS

### IMAGING MODES

IR Reflection  
IR Transmission  
Visible  
Live IR  
Mosaic Stitching (IR and Visible)  
Hypercube Collection

### SPECIFICATIONS

### IR IMAGING MODE

PARAMETER	HIGH-RESOLUTION IR (0.7 NA)	WIDE-FIELD IR (0.3 NA)
Wavelength Range	Standard Configuration: 1800 cm <sup>-1</sup> to 950 cm <sup>-1</sup> Customizable between 2300 cm <sup>-1</sup> and 800 cm <sup>-1</sup>	
Image Cube Acquisition Time	< 40 s (450 absorbance images collected at 2 cm <sup>-1</sup> spacing)	
Camera Array Size	480 x 480	480 x 480
Image Pixel Size	1.3 μm (0.7 NA)	4.3 μm (0.3 NA)
Diffraction-Limited Spatial Resolution	< 5 μm @ λ = 5.5 μm	< 12 μm @ λ = 5.5 μm
Numerical Aperture	0.7	0.3
Spectral Resolution	Variable, down to 2 cm <sup>-1</sup>	
Minimum Detectable Signal	< 3 mAU per scan	
Working Distance	> 8 mm	> 25 mm
Field of View (FOV)	650 μm x 650 μm (0.7 NA)	2 mm x 2 mm (0.3 NA)

### STAGE

Stage Travel X	> 75 mm*
Stage Travel Y	> 50 mm*
Stage Travel Z	> 10 mm
Stage Repeability	< 1 μm

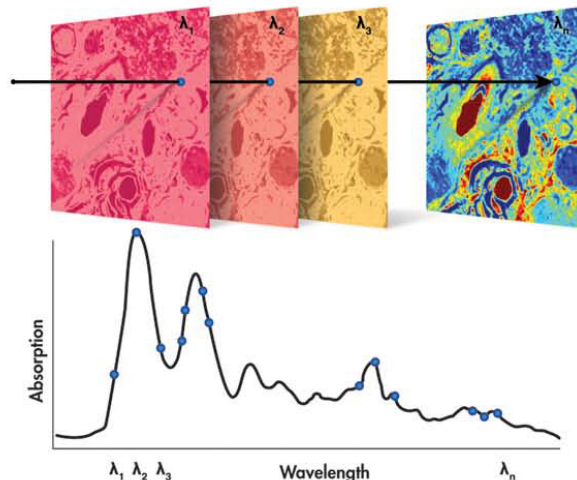
\*Customizable up to 100 mm

### DATA OUTPUT FORMATS

MATLAB®  
ChemVision™  
ENVI®

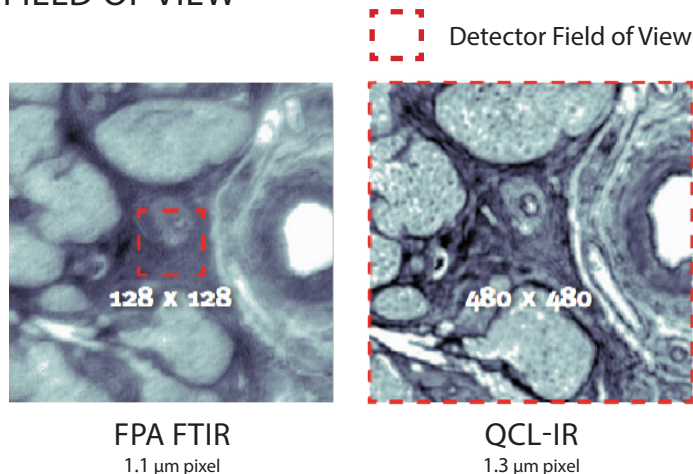
The information in this data sheet is to the best of our knowledge, accurate as of the date of issue. Leonardo DRS reserves the right to change this information without notice. Nothing herein shall be deemed to create any warranty, expressed or implied. Copyright © Leonardo DRS 2018 All Rights Reserved.

## HYPERSPECTRAL DATA CUBE



A high-resolution spectrum is collected simultaneously at every image pixel position (230,400 pixels per FOV) in about 35 seconds.

## FIELD OF VIEW



With a 128x128 FPA FTIR, it would require 16 fields of view to cover an area similar to a single field of view of the Spero-QT.

INVISIBLE LASER RADIATION  
AVOID EXPOSURE TO THE BEAM  
CLASS 3B LASER PRODUCT



REV C-2018